



# Club Med Tomamu

## **Going in Summer**

Ride a new wave

Sprawled across over 145 hectares of Tomamu Mountain, Club Med introduces a thrilling summer escape with boundless activities and excursions for the whole family. Discover the Unkai Terrace and witness an unbelievable natural spectacle as a sea of clouds progressively disperses to reveal breathtaking mountain views. From nature hiking and flower farm visits, to riding Japan's largest indoor wave pool right in front of the Resort, Club Med Tomamu Hokkaido offers a wide choice of activities for adults and little ones. Fresh seafood, premium Wagyu beef, and award-winning locally brewed spirits make this more than a destination to discover – a culinary journey to enjoy. Together with family and friends, find all the summer excitement you seek, right here at Club Med Tomamu Hokkaido all-inclusive Resort.

## Highlights of Club Med Tomamu in summer :

### Unkai terrace



The “Unkai” (sea of clouds in Japanese) Terrace elevation of 1088 meters is a perfect altitude to encounter this phenomenon. From the terrace you can see the sea of clouds that spreads beautifully on the mountaintop of Hokkaido like a panoramic Japanese scroll painting. Get up early at sunrise, spend five minutes in the gondola and enjoy a cup of coffee in front of the breathtaking sea of clouds. If you are lucky, you may be able to enjoy this astonishing experience.

- \* Unkai Terrace is a facility operated by Hoshino Resorts Co., Ltd.
- \* Unkai Terrace is opened from Mid-May to Mid-October.
- \* Club Med customers will receive a onetime gondola ticket at check-in. (a supplement will apply for the second and subsequent times)
- \* Tembo Cafe (operated by Hoshino Resorts) fees are not included!

### Blissful gourmet experience



Stimulate your senses with an unforgettable gourmet experience, drinking and tasting to your heart's content. At the main restaurant designed with the image of the four seasons of Japan, you can enjoy Japanese food using abundant ingredients unique to Hokkaido and gourmet foods from all over the world such as French, Italian, and Chinese with a daily menu. Including a buffet with three meals a day, there are plenty of light meals between meals. Please enjoy your meal and drink in the mood at that time. ( supplement may apply for extra requests)

### Colors of Hokkaido



Embark on a journey to discover the stunning scenery and shades of Hokkaido on a drive or optional tour. About an hour from Club Med Hokkaido Tomamu, there are areas with beautiful summer flower fields such as Tomita Farm and Biei no Sato. In addition, the blue pond that praises the azure water created by nature is one of the must-see views.

### Trapeze



Club Med's specialty activity is the trapeze. Located in the center of Hokkaido, this mountainous forest area boasts vast skies and pristine nature, making it a great place to try trapeze. A dedicated GO will teach you the technique in an easy-to-understand manner.

## **Mountain Bike**



Sensational hikes to share. Take to the mountain with experienced G.O.'s for a thrilling adventure you won't soon forget. Ride your mountain bike along scenic trails or hike to the top for a 360-degree view

Take advantage of the peaceful atmosphere of the mountainous landscape to organize an intimate picnic.

## **Walk in the heart of nature**



Explore a life-size playground with your family to learn about the flora and fauna of the Tomamu Mountains. Rewarding and fun, this G.O.-guided ecological trek takes you through extraordinary landscapes and lush vegetation. As you emerge onto the flowering hills, take time to breathe in the pure mountain air. Discover the many advantages of a region that enjoys ideal temperatures in summer.

## **Water sports and many outdoors activities**

Please check the Club Med website

## Accommodation

### **The concept: Experience the magic of the Japanese mountains.**

In summer, the resort imposes its modern codes on the mountain. The brand-new resort offers sleek rooms with contemporary design, scattered in 8-story buildings. They are a delicious mix between Japanese minimalism and French chic.



### **Family Superior Room**

38 m<sup>2</sup>

Maximum capacity: 4 people



### **Superior Room**

38 m<sup>2</sup>

Maximum capacity: 2 people



### **Junior Family Superior Room**

42 m<sup>2</sup>

Maximum capacity: 3 people



**Interconnecting Junior Family Superior Rooms**

84 m<sup>2</sup> (2x42 m<sup>2</sup>)

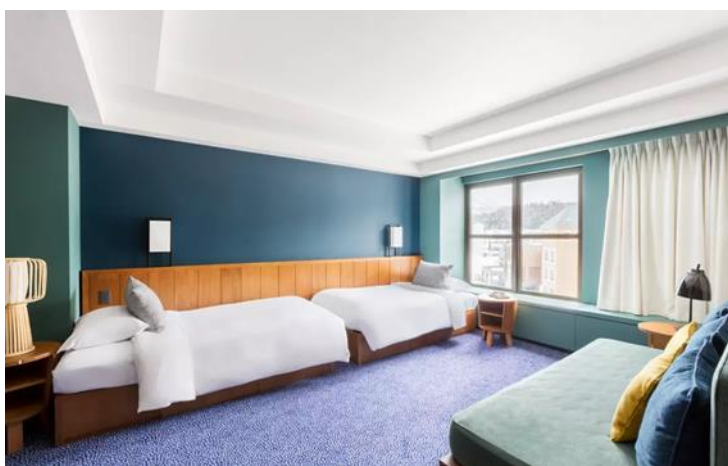
Maximum capacity: 6 people



**Superior Room - Mobility Accessible**

38 m<sup>2</sup>

Maximum capacity: 2 people



**Master Family Superior Room**

69 - 71 m<sup>2</sup>

Maximum capacity: 5 people



**Deluxe Room**

38m<sup>2</sup>

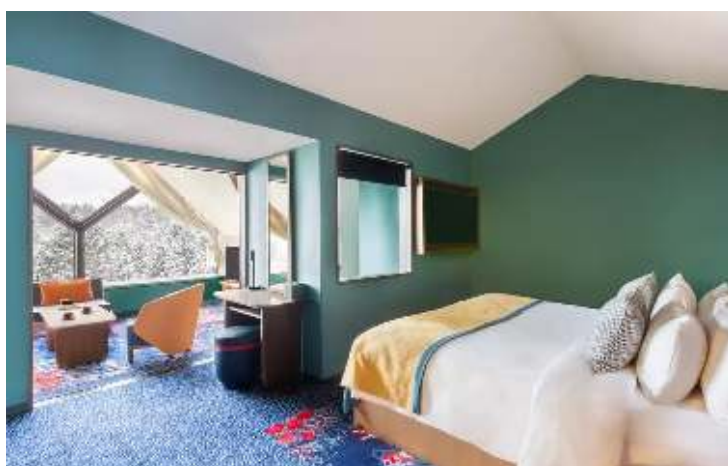
Maximum capacity : 3 people



**Family Suite**

55 m<sup>2</sup>

Maximum capacity : 5 people



**Master Family Suite – Duplex**

72 m<sup>2</sup>

Maximum capacity : 5 people

## **Main restaurant ITARA**



Enjoy a variety of international and Japanese delicacies. With 4 distinct spaces, each inspired by the regions of Hokkaido, the setting is sure to surprise you. While making the most of the deliciousness of Hokkaido's unique ingredients, world-experienced chefs work their magic to create appealing recipes. The theme changes daily, and you can enjoy authentic flavors from around the world at every meal.

From dinner on the day of arrival to lunch on the day of departure, food and beverages are all included (\*). Enjoy an unforgettable dining experience.

(\* Some optional menus can be ordered for an additional fee)

## **Yakiniku restaurant HAKU**



At the yakiniku restaurant HAKU, you can enjoy fresh, high-quality meat and vegetables baked on the spot.

\* Please check availability on site.

\* Advance reservations can be made at the main restaurant "Itara".

\* additional charge applies.

## **Main bar UNKAI**



A warm space with a cozy interior. There is also terrace seating from which you can enjoy the magnificent view of the Tomamu Mountains. It is open not only at night but also during the day.



There is also a theater space in the main bar, where shows and G.O. events will be organized in the evening.

### **Quiet Bar THE NEST**



Spend time with friends in an elegant bar surrounded by forests. Forget the hustle and bustle of the day while gazing at the landscape outside, and enjoy the best of local whiskey and sake tastings in a relaxing space.

\* Please check the business date and time on site.

\* Additional fee will be charged.

### **Mina Mina Beach** **Hoshino Resort management**



Japan's largest wave pool with a total length of 80m and a width of 30m. There is also a children's pool with a depth of 30 cm. "Mina" means smile in Ainu language.

(\* If you are staying at Club Med, you can enjoy it for free as many times as you like during your stay.)